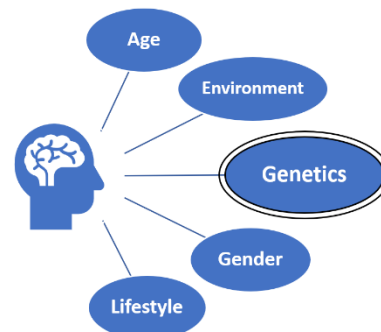
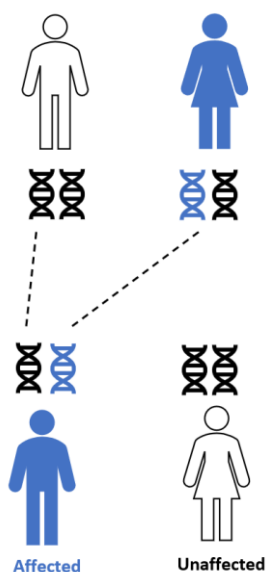


Parkinson's disease is multifactorial in most families; it is likely caused by an interplay of both genetic and environmental factors. A number of genes have been identified as risk factors for Parkinson's disease, with many others likely unknown. This fact sheet outlines basic information about the VPS35 gene as well as risk to individuals and their relatives. If you have a VPS35 variant and/or are concerned about your risk, speaking with a genetic counselor can be helpful.



VPS35 Variants

Currently, only one specific variant in the VPS35 gene, called Asp620Asn, is known to be disease-causing for Parkinson's disease. This variant is associated with classic symptoms of Parkinson's disease, but possibly with an earlier age of onset than average. VPS35 variants are a rare cause of Parkinson's disease.



VPS35 variants are inherited in an autosomal dominant fashion (see Figure). This means that a person only needs to inherit one VPS35 gene variant to have Parkinson's disease or the associated risk of Parkinson's disease. This also means that both males and females can pass on and inherit the variant. Each child of a person with a VPS35 variant has a 50% (or 1 in 2) chance to inherit the variant. Similarly, this individual has a 50% (or 1 in 2) chance to not inherit the variant from their parent. Most individuals with a VPS35 variant will have an affected parent. However, not everyone with a VPS35 variant develops Parkinson's disease; this is called incomplete penetrance.

Research Opportunities

Many research studies are interested in enrolling people with VPS35 variants. This is true whether or not that person or anyone else in their family has Parkinson's disease. Some studies are trying to understand more about the causes of Parkinson's disease. Other studies are working to develop new treatments. Trials of new medications for people with Parkinson's disease and VPS35 variants are ongoing.

Various research projects at the Indiana University School of Medicine include genetic testing and genetic counseling for Parkinson's disease. These projects enroll volunteers with and without Parkinson's disease. To learn more, please contact our team at pdnexus@iu.edu or call 888-830-6299.

References

- Cook Shukla, L, Schulze, J, Farlow, J et al. Parkinson Disease Overview. 2004 May 25 [Updated 2019 Jul 25]. In: Pagon RA, Adam MP, Ardinger HH, et al., editors. GeneReviews® [Internet]. Seattle (WA): University of Washington, Seattle; 1993-2016. Available from: <https://www.ncbi.nlm.nih.gov/books/NBK1223/>
- Deutschlander A, Ross OA, Wszolek ZK. VPS35-Related Parkinson Disease. Gene Reviews. 2017 Aug 10. In: Adam MP, Ardinger HH, Pagon RA, et al., editors. GeneReviews [Internet]. Seattle (WA): University of Washington, Seattle; 1993-2019. Available from <https://www.ncbi.nlm.nih.gov/books/NBK447258/>
- Kim C and Alcalay R. Genetic Forms of Parkinson's Disease. Seminars in Neurology 2017;37:135-146.
- Tysnes OB and Storstein A. Epidemiology of Parkinson's disease. J Neural Transm (Vienna). 2017; 124(8):901-905.

**For additional information about Parkinson's
disease genetics and research visit PDNexus.org**

Authors: Schulze J, Miller A, Cook L, Verbrugge J, Rumbaugh M, Heathers L.

Updated: May 16th, 2022

